

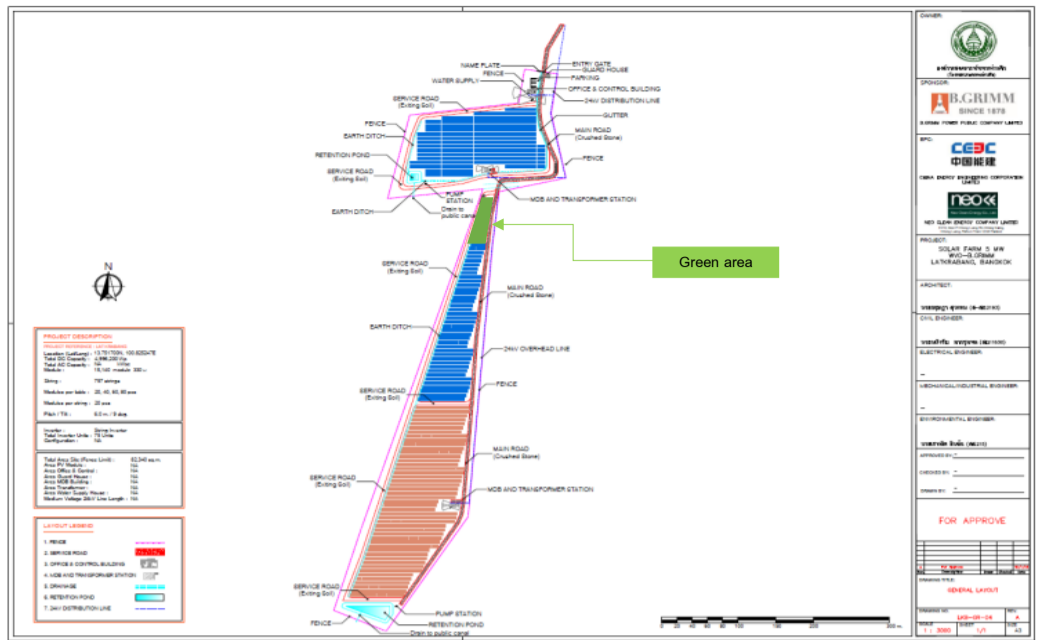
Biodiversity Assessment

No.	Project	Company	Name	Location	Capacity (MW)	Project area (rai)	Project area (hectare)	Year of Biodiversity Impact Assessment	Biodiversity Impact Assessment (in the past 5 years)	Result of the assessment (impact)	Restoration area (hectare)
Co-Generation											
1	Combined cycle power plant	Amata B.Grimm Power 1 Co.Ltd.	ABP1	Amata City Chonburi Industrial Estate	170 / 145	52.49	8.40	2019	Yes	Low	n/a
2	Amata B.grimm power 2 (Extension) project	Amata B.Grimm Power 2 Co.Ltd.	ABP2	Amata City Chonburi Industrial Estate	185.23 / 145	25.136	4.02	2019	Yes	Low	n/a
3	Industrial power and steam generation project	Amata B.Grimm Power 3 Co.Ltd.	ABP3	Amata City Chonburi Industrial Estate	173	25.47	4.08	2019	Yes	Low	n/a
4	Don hua lo Natural gas power plant 1 project	Amata B.Grimm Power 4 Co.Ltd.	ABP4	Amata City Chonburi Industrial Estate	142	18.1	2.90	2019	Yes	Low	n/a
5	Don hua lo Natural gas power plant 2 project	Amata B.Grimm Power 5 Co.Ltd.	ABP5	Amata City Chonburi Industrial Estate	142	16.72	2.68	2019	Yes	Low	n/a
6	Industrial power plant project (Expansion) project	Amata B.Grimm Power (Rayong) 1 Co.Ltd.	ABPR1	Amata City Rayong Industrial Estate	142.1	25.08	4.01	2014	No		n/a
7	Pluak Daeng Industrial Power Plant (Expansion) project	Amata B.Grimm Power (Rayong) 2 Co.Ltd.	ABPR2	Amata City Rayong Industrial Estate	142.1	23.95	3.83	2014	No		n/a
8	Natural Gas Power Plant Project	Amata B.Grimm Power (Rayong) 3 Co.Ltd.	ABPR3	Amata City Rayong Industrial Estate	142.1	30.84	4.93	2015	No		n/a
9	Natural Gas Power Plant Project	Amata B.Grimm Power (Rayong) 4 Co.Ltd.	ABPR4	Amata City Rayong Industrial Estate	142.1	20.13	3.22	2015	No		n/a
10	Natural Gas Power Plant Project	Amata B.Grimm Power (Rayong) 5 Co.Ltd.	ABPR5	Amata City Rayong Industrial Estate	142.1	23.77	3.80	-	No		n/a
11	Natural Gas Power Plant Project	B.Grimm Power (WHA) 1 Co.,Ltd.	BG(WHA)1	WHA Chonburi Industrial Estate	142	30.615	4.90	2021	Yes	Low	n/a
12	Bang ka di Combined cycle power plant project	B.Grimm BIP Power 1 Co.,Ltd.	BIP1	Bangkadi Industrial Park	124	13.591	2.17	2013	No		n/a
13	Bangkadi Natural Gas Power Plant 2	B.Grimm BIP Power 2 Co.,Ltd.	BIP2	Bangkadi Industrial Park	107	10.964	1.75	2013	No		n/a
14	Laemchabang power plant project	B.Grimm Power (Leamchabang) 1 Co.,Ltd.	BPLC1	Leamchabang Industrial Estate	130 / 145	11.37	1.82	2019	Yes	Low	n/a
15	60 MW power plant construction project	B.Grimm Power (Leamchabang) 2 Co.,Ltd.	BPLC2	Leamchabang Industrial Estate	60	2.473	0.40	2019	Yes	Low	n/a
Solar											
1	B.Grimm Yanhee Solar Power (Sai Luang 2)	B.Grimm Yanhee Solar Power Co.,Ltd.	SL2	Bang Luang, Bang Len, Nakhon Pathom	8	123	19.68	2016	Yes	Low	n/a
2	B.Grimm Yanhee Solar Power (Sai Luang 3)	B.Grimm Yanhee Solar Power Co.,Ltd.	SL3	Bang Luang, Bang Len, Nakhon Pathom	8	130	20.8	2016	Yes	Low	n/a
3	B.Grimm Yanhee Solar Power (Sai Luang 9)	B.Grimm Yanhee Solar Power Co.,Ltd.	SL9	Bang Luang, Bang Len, Nakhon Pathom	7.2	107	17.12	2016	Yes	Low	n/a
4	B.Grimm Yanhee Solar Power (Sai Luang 10)	B.Grimm Yanhee Solar Power Co.,Ltd.	SL10	Bang Luang, Bang Len, Nakhon Pathom	7.5	174	27.84	2016	Yes	Low	n/a
5	B.Grimm Yanhee Solar Power (Sai Phutsa)	B.Grimm Yanhee Solar Power Co.,Ltd.	SPS	Ban Luang, Don Tom, Nakhon Pathom	8	132	21.12	2016	Yes	Low	n/a
6	B.Grimm Yanhee Solar Power (Sai Manao)	B.Grimm Yanhee Solar Power Co.,Ltd.	SMN	Hin Moon, Don Tom, Nakhon Pathom	8	94	15.04	2016	Yes	Low	n/a
7	B.Grimm Yanhee Solar Power (Sai Yai Na)	B.Grimm Yanhee Solar Power Co.,Ltd.	SYN	Bang Luang, Bang Len, Nakhon Pathom	8	110	17.6	2016	Yes	Low	n/a
8	B.Grimm Yanhee Solar Power (Sai Sena 2)	B.Grimm Yanhee Solar Power Co.,Ltd.	SSN2	Don Tong, Sena, Ayutthaya Lakchai, Ladbualuang, Ayutthaya	5	78	12.48	2016	Yes	Low	n/a
9	Solarwa (Lui riverside left)	Solarwa Co.,Ltd.	SLRN	Bang Luang, Bang Len, Nakhon Pathom	8	131	20.96	2016	Yes	Low	n/a
10	Solarwa (Sai Chaluyay)	Solarwa Co.,Ltd.	SCL	Bang Luang, Bang Len, Nakhon Pathom	8	119	19.04	2016	Yes	Low	n/a
11	Solarwa (Sai Sab)	Solarwa Co.,Ltd.	SS	Pai Huchang, Bang Len, Nakhon Pathom	8	119	19.04	2016	Yes	Low	n/a
12	Solarwa (BGTT2)	Solarwa Co.,Ltd.	BGTT2	Kham Phran, Wang Muang, Saraburi	8	95	15.2	2016	Yes	Low	n/a
13	Solarwa (BGTT3)	Solarwa Co.,Ltd.	BGTT3	Kham Phran, Wang Muang, Saraburi	6.5	75	12	2016	Yes	Low	n/a
14	Solarwa (BGTT1)	TPS Commercial Co.,Ltd	BGTT1	Kham Phran, Wang Muang, Saraburi	8	90	14.4	2016	Yes	Low	n/a
15	B.Grimm Solar Power (Sakaeo) 1	B.Grimm Solar Power (Sakaeo) 1 Co.,Ltd.	BG(SK)1	Sala Lamduan, Muang Sakaeo	8	111	17.76	2016	Yes	Low	n/a
16	Ground-mounted solar power generation project for government agencies at Chachoengsao	B.Grimm Power PLC.	CCS	Muang district, Chachoengsao	3.58	40	6.4	2018	Yes	Low	n/a
17	Ground-mounted solar power generation project for government agencies at Lat Krabang	B.Grimm Power PLC.	LKB	Lat Krabang district, Bangkok	5	51.46	8.23	2018	Yes	High	8.20
18	Ground-mounted solar power generation project for government agencies at Sai Noi	B.Grimm Power PLC.	SAI	Sai Noi district, Nonthaburi	5	50.71	8.11	2018	Yes	High	8.11
19	Ground-mounted solar power generation project for government agencies at Bang Bo	B.Grimm Power PLC.	BBO	Bang Bo district, Samut Prakan	5	62.81	10.05	2018	Yes	Low	n/a
20	Ground-mounted solar power generation project for government agencies at Nong Chok	B.Grimm Solar Power 1 Co.,Ltd.	NOC	Nong Chok district, Bangkok	5	49.47	7.92	2018	Yes	High	7.93
21	Ground-mounted solar power generation project for government agencies at Chon Daen	B.Grimm Solar Power (Chon Daen) Co.,Ltd.	CHO	Chon Daen district, Phetchabun	2.25	31.87	5.10	2018	Yes	Low	n/a
22	Ground-mounted solar power generation project for government agencies at Ban Na Doem	B.Grimm Solar Power (Chai Badan) Co.,Ltd.	BND	Ban Na Doem district, Surat Thani	5	51.42	8.2272	2018	Yes	Low	n/a

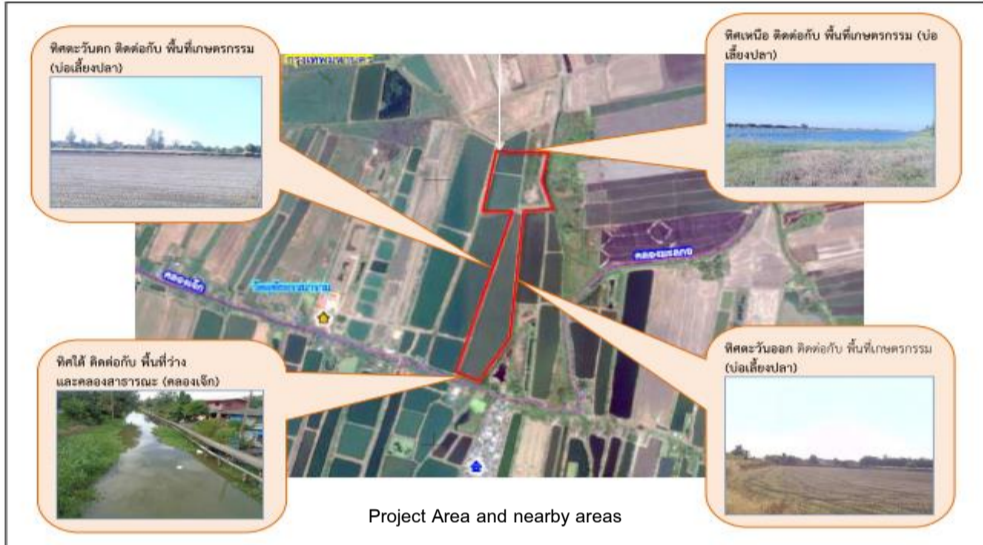
377.03

24.24

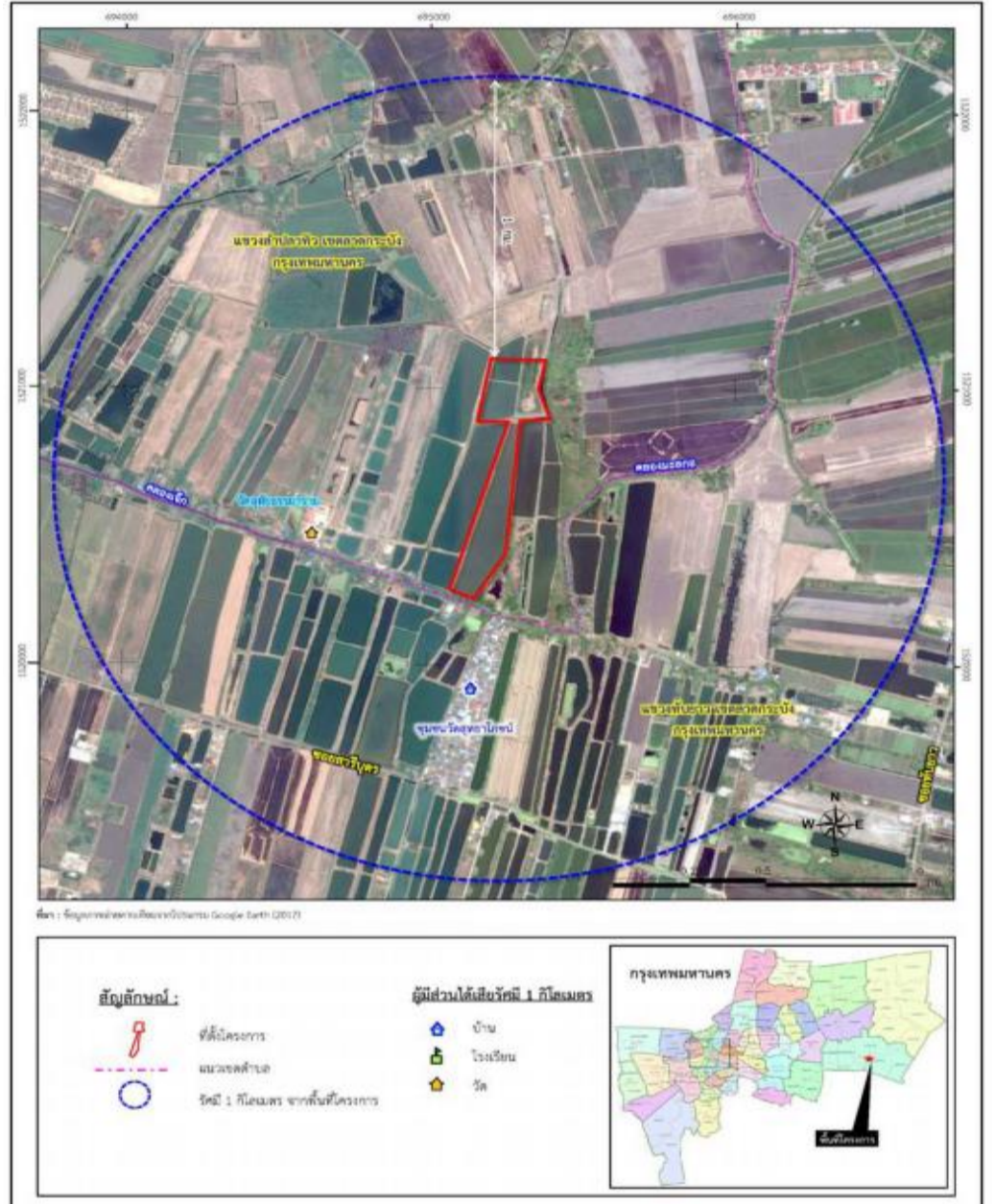
ITEM	Detail	Remark
Site location	13.7550541,100.8259064	
Capacity	5.00 MW	
Area	51.25 Rai or 8.2 ha	
Number of Photovoltaic panel	15,140	
Green area	3,547 m2	
Notify COD Completion by ERC	30-Dec-18	
Identify the area where restoration	- The project has no space for waiting to be utilized (the purchase space is equal to the used space) - The project will improve the area under the solar panel to look beautiful. It does not affect the habitat of living organisms and not reduce production efficiency too. - The project will consider planting the plants or trees in the green area of the project appropriately	



Project Layout

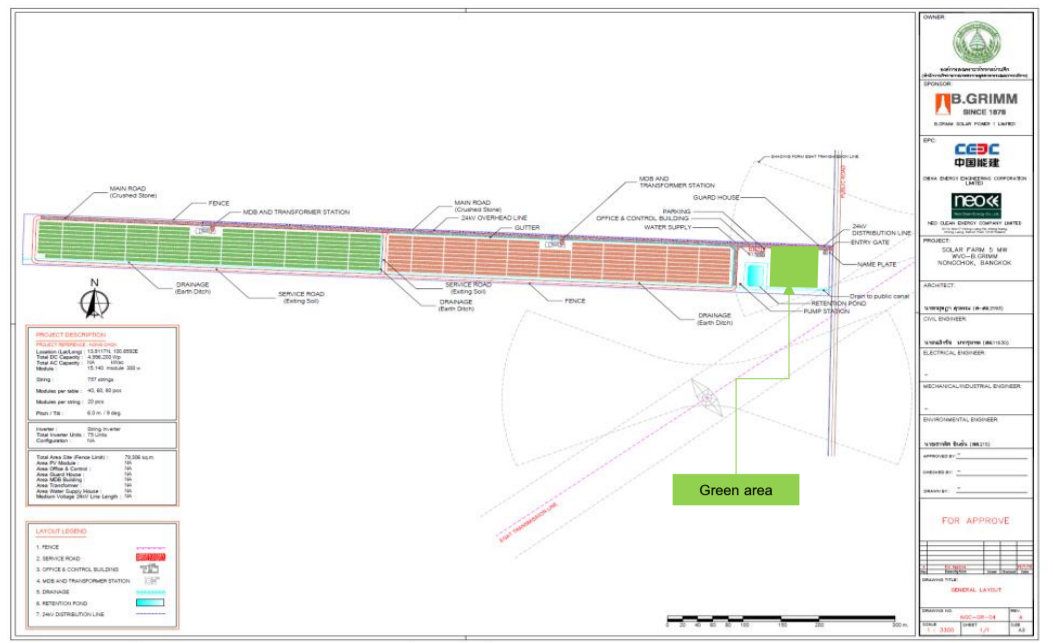


Project Area and nearby areas

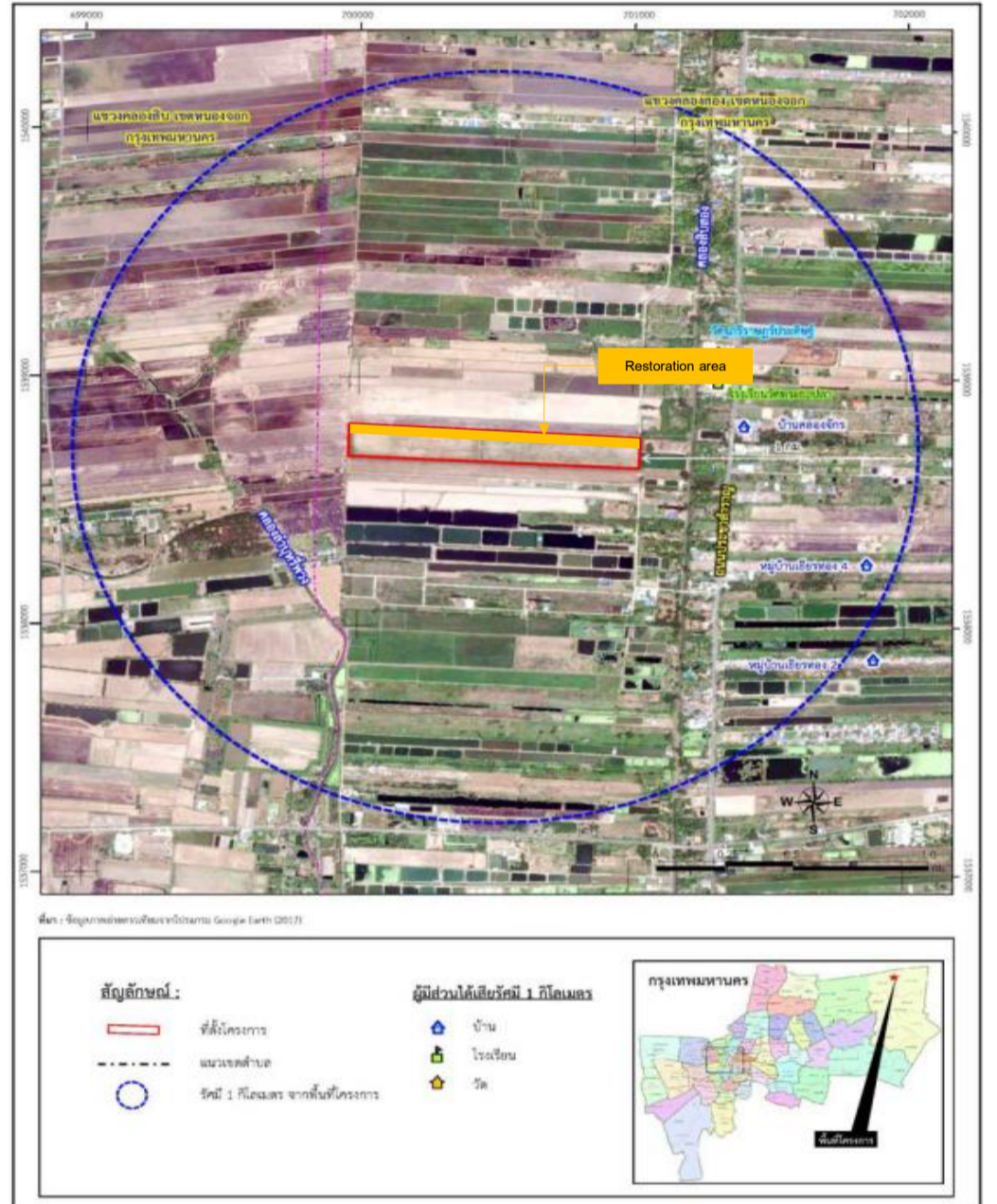
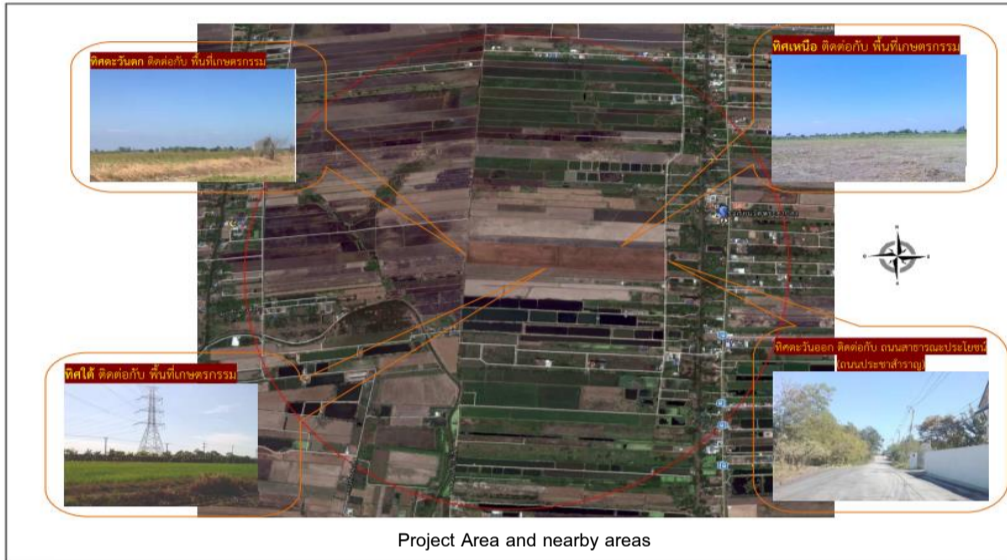


Project Area and boundary of study (1 km.)

ITEM	Detail	Remark
Site location	13.911218,100.8602004	
Capacity	5.00 MW	
Area	49.57 Rai 7.9306 ha	
Number of Photovoltaic panel	15,140	
Green area	1,200.00 m2	
Notify COD Completion by ERC	30-Dec-18	
Identify the area where restoration	<p>- The project consideration to restore the area in space for waiting to be exploited.</p> <p>- The project will improve the area under the solar panel to look beautiful. It does not affect the habitat of living organisms and not reduce production efficiency too.</p> <p>- The project will consider planting the plants or trees in the green area of the project appropriately.</p>	

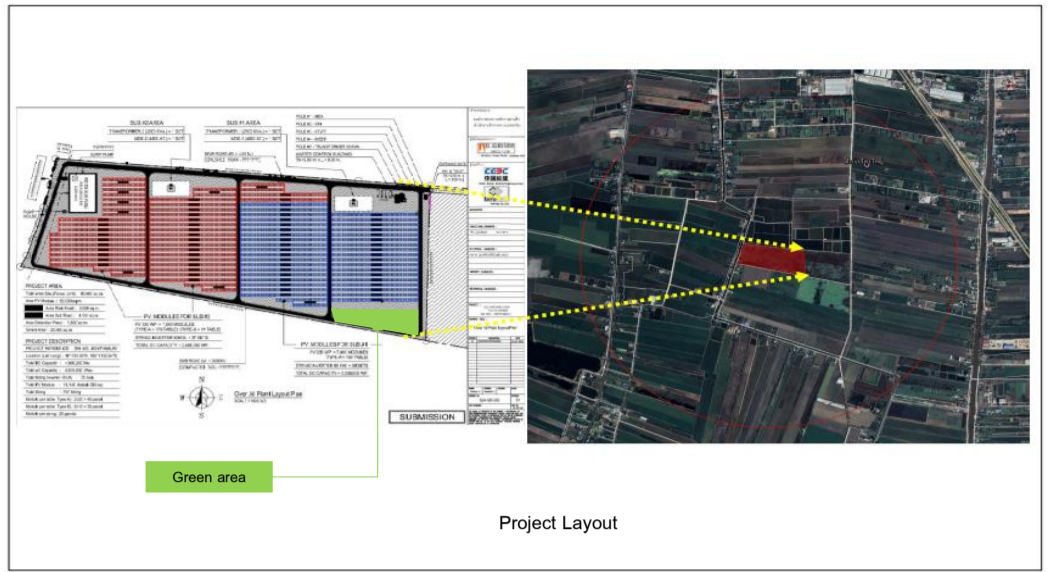


Project Layout

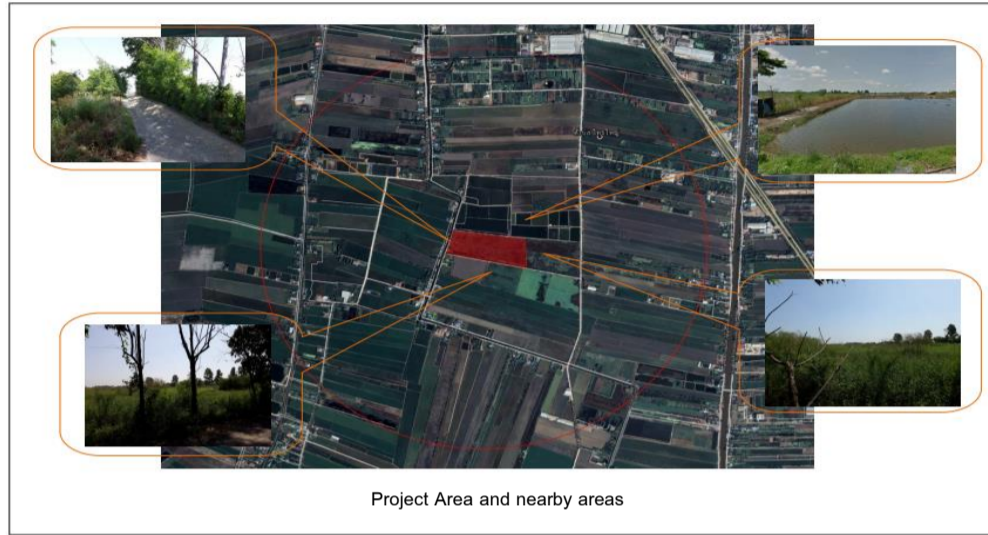


Project Area and boundary of study (1 km.)

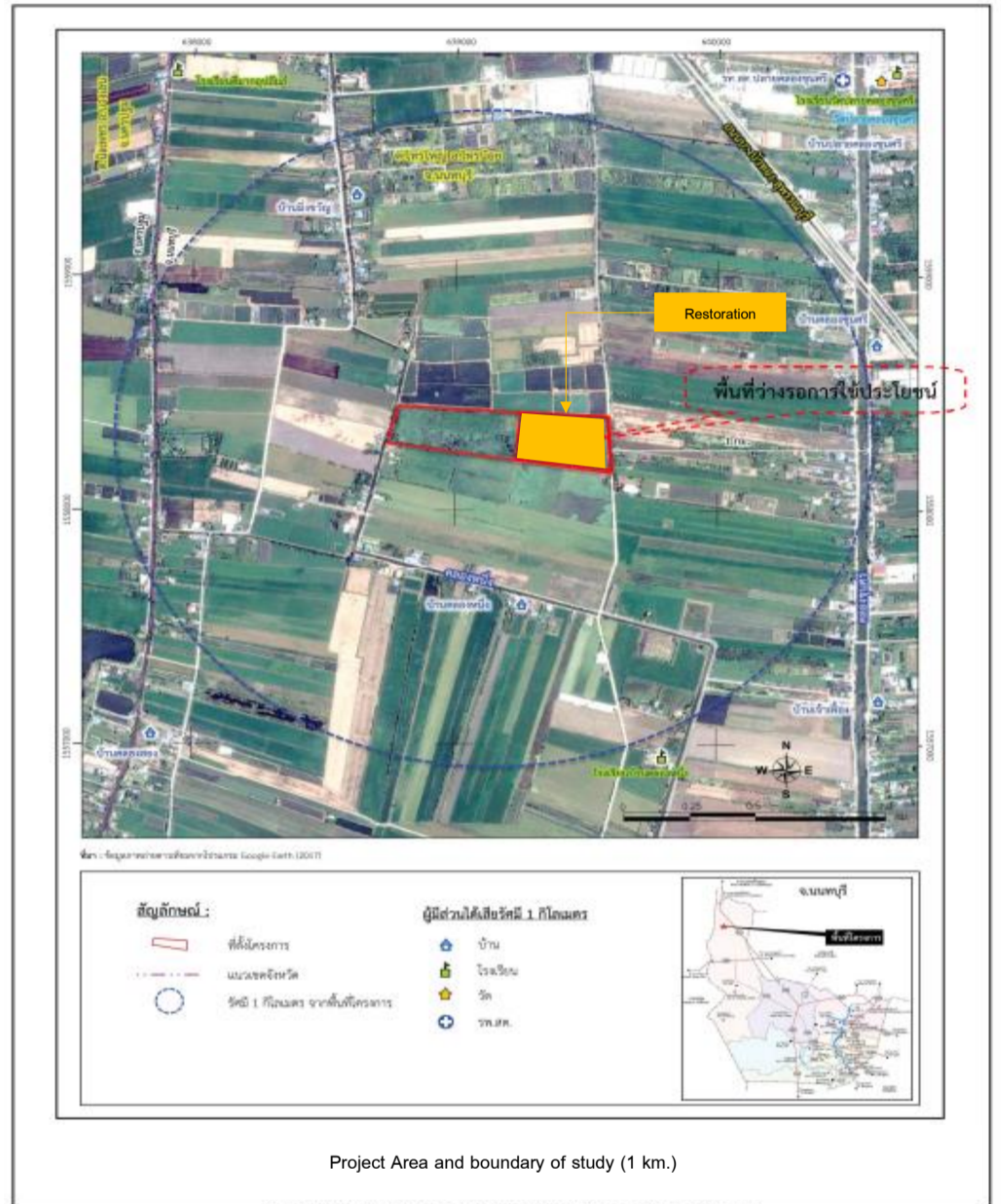
ITEM	Detail	Remark
Site location	14.093070, 100.290690	
Capacity	5.00 MW	
Area	50.71 Rai	
	8.1138 ha	
Number of Photovoltaic panel	15,140	
Green area	20,000.00 m2	
Notify COD Completion by ERC	1-Nov-18	
Identify the area where restoration	<p>- The project consideration to restore the area in space for waiting to be exploited.</p> <p>beautiful. It does not affect the habitat of living organisms and not reduce production efficiency too.</p> <p>- The project will consider planting the plants or trees in the green area of the project appropriately.</p>	



Project Layout



Project Area and nearby areas



Project Area and boundary of study (1 km.)